

miosolo

all-in-one nappy

Congratulations, you've taken the first step towards using reusable nappies! It's really simple to do and once you get into a routine it all becomes that much easier. Plus, we'll be here to help you through your reusable nappy journey. Before you can get those super cute prints onto your baby's bottom you'll need to prewash¹ your nappies at least once before you start using them, this will make them more absorbent and ready to use. This user guide provides you with all the information you need to care for your nappies.

Welcome to the family!



¹ Your nappies will become more absorbent after the first few washes. Take care that you have purchased the correct product as washed and/or used nappies purchased from us cannot be replaced/refunded.
² To get the best out of your nappies we recommend washing regularly at 40°C with one scoop of miofresh nappy cleanser and air drying them. Washing regularly at higher temperatures and frequent tumble drying can result in premature deterioration of your nappies. Please note that bright colours may fade over time.
 † Please note: you must ONLY soak the core of the miosolo all-in-one nappy keeping the laminated fabric out of the soaking solution. Bambino Mio cannot be responsible for the premature deterioration of its products due to incorrect laundry procedures.



WASHING

It is important that you wash all Bambino Mio products in accordance with the washing instructions on the individual garment label. You must remove any excess soiling before washing your nappies. You can wash your nappies up to 60°C using the recommended amount of non-biological washing detergent.² Do not use fabric softener when washing as this can affect the absorbency of your nappies.

We also recommend adding one scoop (15mL) of miofresh nappy cleanser to your washing machine drawer. This will help freshen and deodorise your nappies whilst washing.

TIP: Fold back the Velcro® laundry tabs on your nappies to protect them in the wash!

miosolo all-in-one nappy



DRYING

We recommend air drying your nappies away from direct heat. Your nappies may be tumble dried on a cold/low setting. However, continuous tumble drying and contact with direct heat may cause your nappies to prematurely deteriorate and can reduce the performance of your nappies. Do not iron your nappies.

TIP: Pull out the absorbent core from inside the nappy after it has been washed as this will help it dry quicker!

STORING

Use a nappy bucket to store your used nappies before washing. Simply store them dry in your nappy bucket until you are ready to wash. When washing day arrives, lift the laundry bag out of the bucket and transfer into the washing machine. Nappies will wash within the laundry bag so there is no need to handle dirty nappies.



STAINS & ODOURS

Due to the nature of this product, we cannot guarantee that staining can be prevented. However, using our miofresh nappy cleanser regularly can help prevent the staining of your nappies. We recommend adding one scoop (15mL) of miofresh to your washing machine drawer in every wash.

If staining occurs, occasionally you can soak the core of your nappies in a hand hot solution of miofresh for at least 2 hours. Use 30mL of miofresh for every 5 litres of water. After soaking, wash at 40°C and give your nappies an additional rinse afterwards.†



TIP: Sunlight is also a great natural way to remove stains!

HAVING PROBLEMS? If you are experiencing problems with your nappies please check the following:

- You have pre-washed your nappies before using them. Your nappies will become more absorbent after the first few washes.
- You are changing frequently; nappies should be changed every 2-4 hours. As your baby gets bigger you may find you need to change your nappy more frequently.
- You are not using fabric softener when washing your nappies as this may be affecting their absorbency.
- The absorbent core inside the nappy is lying flat.
- You may need to add a mioboo (booster pad) to maximise the absorbency of your nappies overnight or during longer periods of time.

If you are following guidelines and are still experiencing problems please contact our customer care team on: +44 (0)1604 883777 or enquiries@bambinomio.com.

STEPS

miosolo

all-in-one nappy

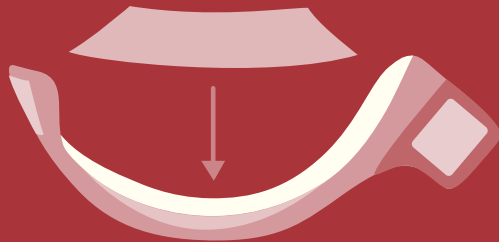
miosolo nappy

onesize

4 kg+
(8 lbs+)

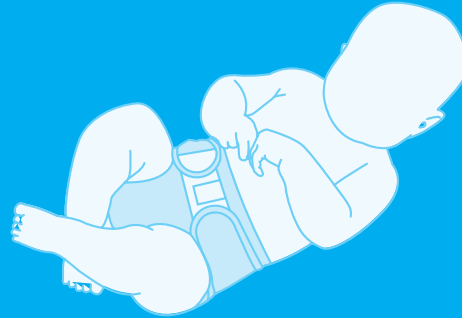
size ranges are approximate

1.



Add the nappy liner³ (optional) and place into your nappy.

2.



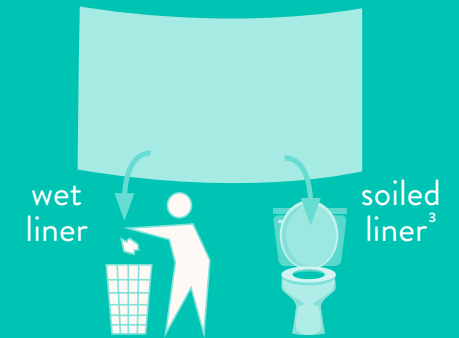
Secure the nappy onto your baby.

3.



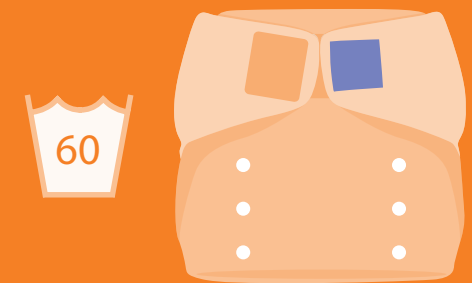
Change your nappy when ready.

4.



Dispose of the nappy liner.

5.



Store your used nappy ready for washing.

¹True for most, but due to the wide range of babies' shapes and sizes, this cannot be guaranteed.

²Soiled liners can be flushed one at a time. Wet liners can be disposed of in the rubbish bin. Caution: flushing of liners may cause blockage in old or damaged drains. No responsibility can be accepted for individual drain systems.