



sportTM
instructions

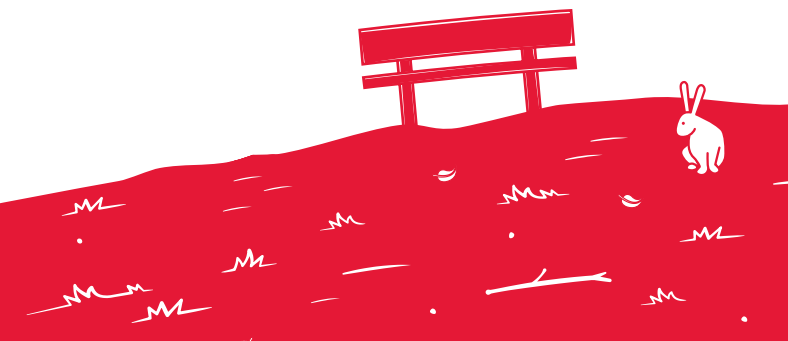
IMPORTANT:

**This document contains instructions
and must be kept for future reference.**

Please read thoroughly before use.

please register your product
purchase online now at
philandteds.com/register







cleaning & caring

check sport™ for cuts & bruises. if your product is damaged in any way, or you're not sure how to use it, please consult our web support (www.philandteds.com/support). here you can get in touch with a local customer care team, made of real live people.

caring for sport™

unlike your children, your sport™ likes to stay clean.

- code brown got you down? never fear! sport™ fabric can be sponge cleaned with warm water, using mild natural soap. do not use detergents or bleach on sport™.
- improper care will void any warranties. do not use sport™ if deterioration is detected or suspected.

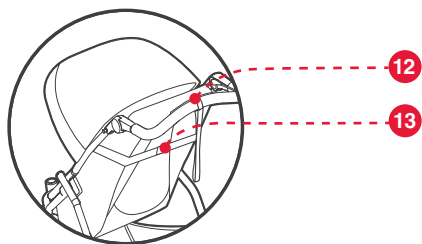
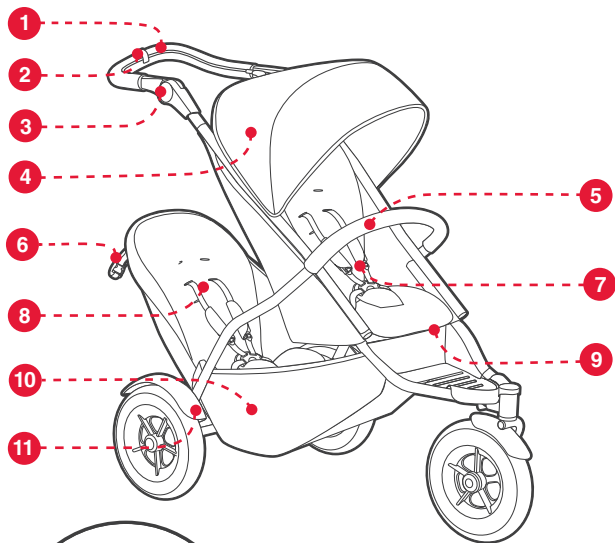
--- important information ---

tyres & tubes

- the valve is car-size. manually inflate to 20 – 22psi max. releasing air gives a softer ride but lower pressure reduces tread life.
- new inner tubes & tyres are generally available (2 1/4" x 12 1/2" tyre) from your dealer, cycle or specialist wheel shops. standard tyre kits can repair punctures.
- a flat tyre can result from grit holding the valve open; to check: inflate tyre, deflate rapidly, & re-inflate.
- tyres & tubes are not under warranty. do not over inflate. tyre pressure is affected by heat especially when inside parked cars.



for more information on caring for your sport™, visit philandteds.com/support





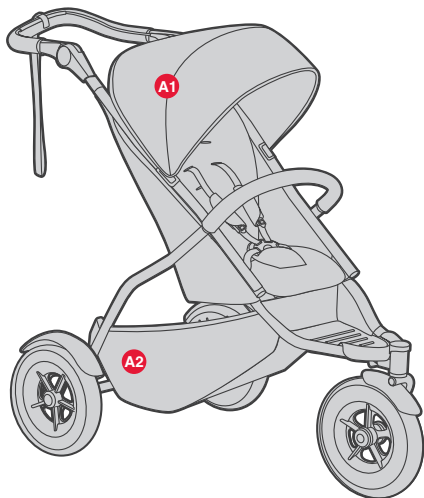
- 1 handlebar
- 2 brake off clip
- 3 handle bar adjustor
- 4 sunhood
- 5 grab bar
- 6 retaining strap
- 7 harness
- 8 double kit
- 9 single hand fold
- 10 parcel tray
(5kg / 11lbs)
- 11 mud gaurds
- 12 auto stop brake lever
- 13 recline strap



- | | | | |
|----|-----------------------------------|----|------------------------------------|
| 1 | Guidon | 1 | Griff |
| 2 | Système de désactivation du frein | 2 | Bremsenentriegelung |
| 3 | Bouton de réglage de la poignée | 3 | Hanbremse |
| 4 | Capote | 4 | Sonnenverdeck |
| 5 | Arceau de maintien | 5 | Buggybügel |
| 6 | Sangle de retenue | 6 | Rückhaltegurt für Zweitsitz |
| 7 | Harnais | 7 | Gurt |
| 8 | Second siège | 8 | Zweitsitz |
| 9 | Pliage facile d'une main | 9 | Sicheres Lenken mit nur einer Hand |
| 10 | Panier de rangement (5kg / 11lbs) | 10 | Gepäckablage (5kg / 11lbs) |
| 11 | Garde-boue arrière | 11 | Schutzbleche hinten |
| 12 | Frein automatique au guidon | 12 | Automatischer Bremshebel |
| 13 | Sangle pour l'inclinaison | 13 | Liege - Verstellriemen |



- | | | | |
|----|----------------------------------|----|--|
| 1 | Manubrio | 1 | Duwstang |
| 2 | Desbloqueo del freno | 2 | Clip om rem tijdelijk uit te schakelen |
| 3 | Freno de mano | 3 | Handrew |
| 4 | Tapa sol | 4 | Zonnekap |
| 5 | Barra delantera | 5 | Bumper |
| 6 | Correa (viene con el double kit) | 6 | Veiligheidsband (behoort bij het duozitje) |
| 7 | Arnés | 7 | Veiligheidsharnas |
| 8 | Double kit | 8 | dobblelt sett |
| 9 | Mecanismo de plegar fastfold | 9 | Met één hand in te klappen |
| 10 | Canastilla (5kg / 11lbs) | 10 | Boodschappenmandje (5kg / 11lbs) |
| 11 | protectores traseros | 11 | Zit-positie verstelriem |
| 12 | Auto nivelado del freno | 12 | Automatische rem beugel |
| 13 | Correa de inclinación | 13 | Zit-positie verstelriem |



A1

max load

20kg / 44lbs

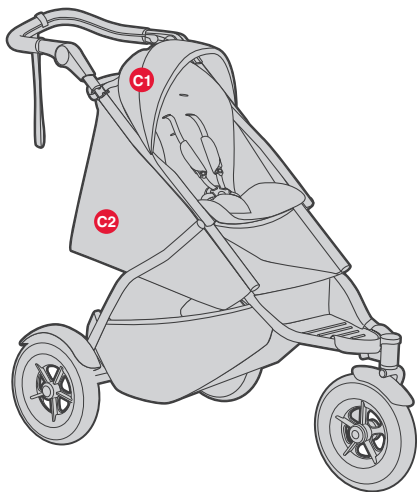
A2

max load

5kg / 11lbs



max load
9kg / 20lbs

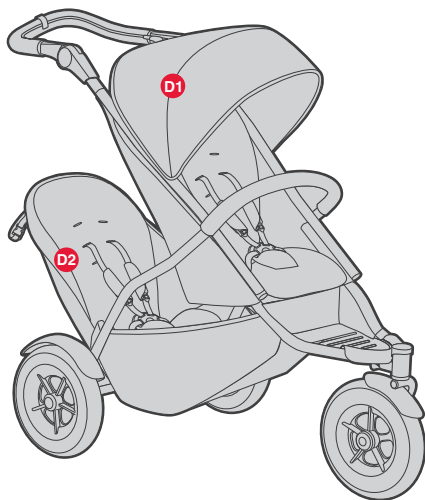


C1

max load
20kg / 44lbs

C2

max load
9kg / 20lbs



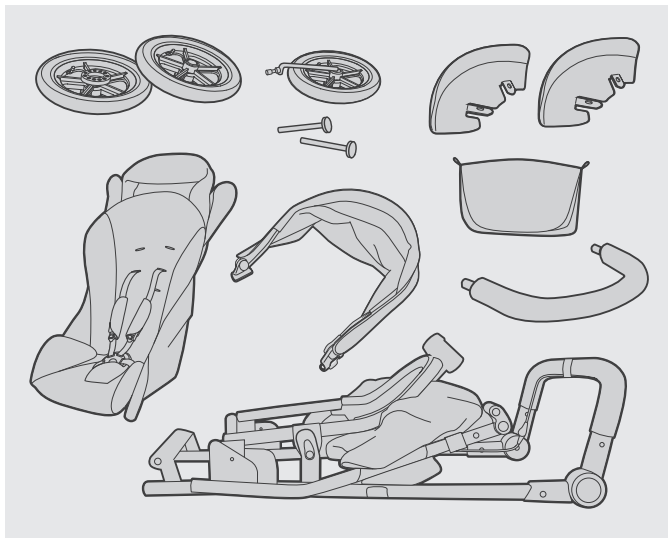
D1 max load
20kg / 44lbs

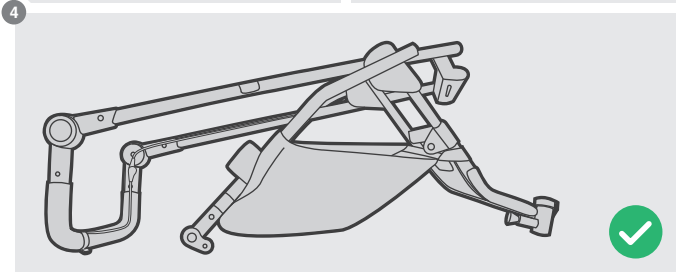
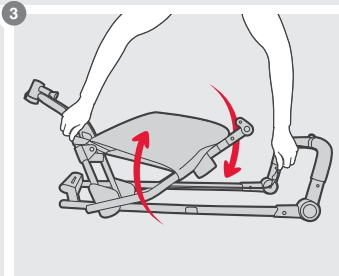
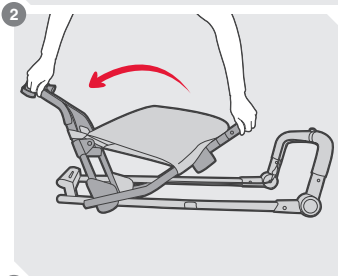
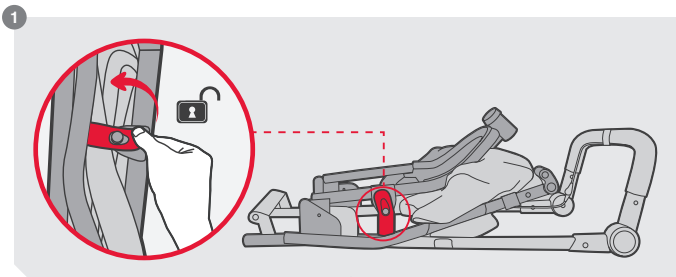
D2 max load
15kg / 33lbs



max load
12kg / 26lbs

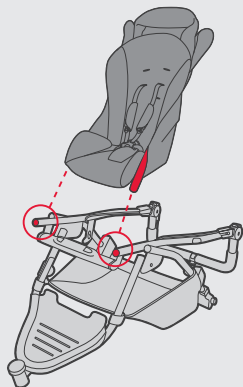




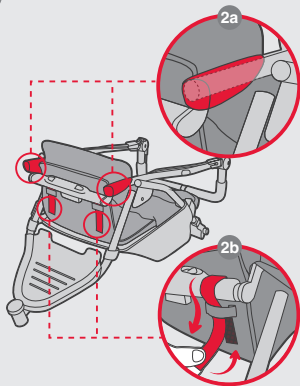




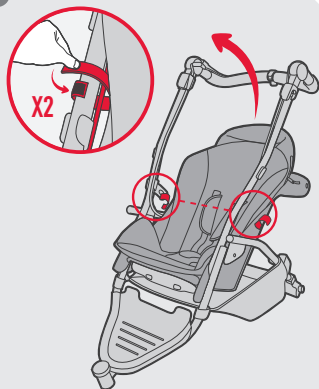
1



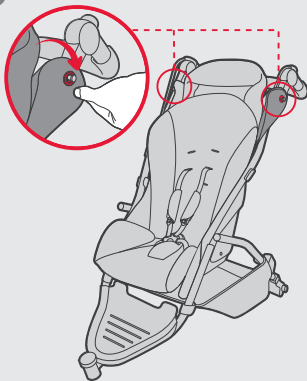
2

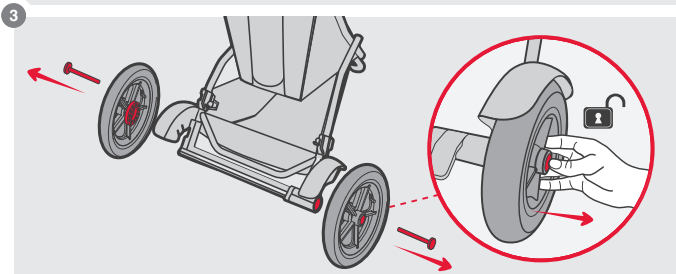
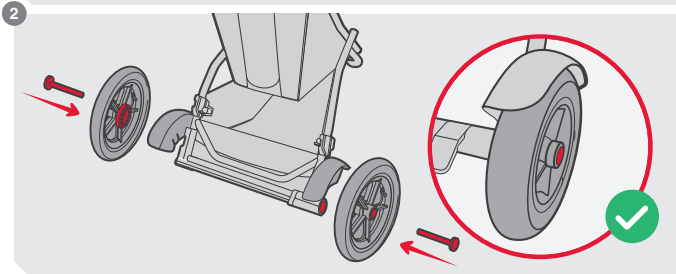
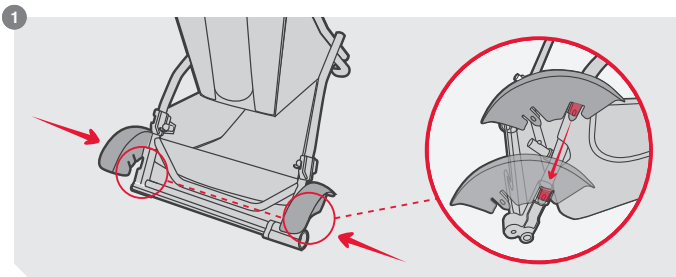


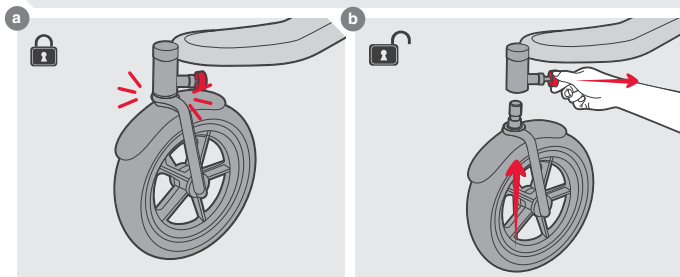
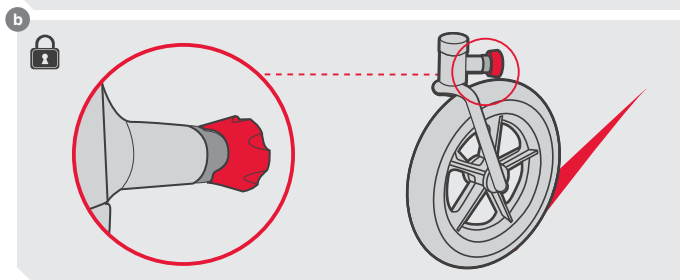
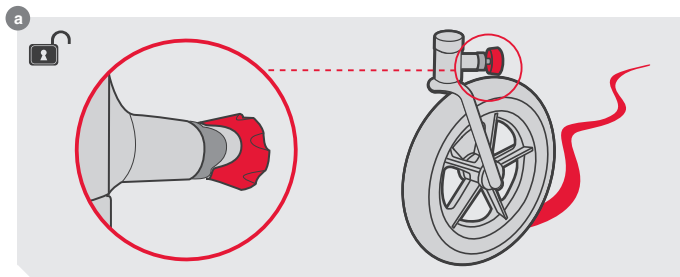
3



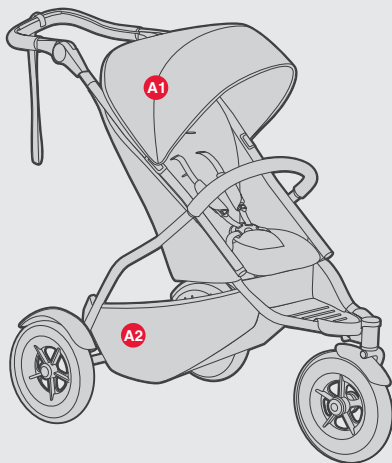
4





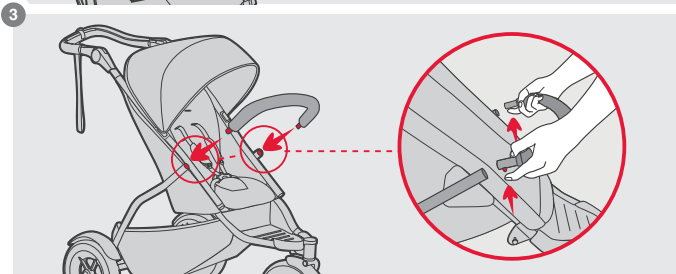
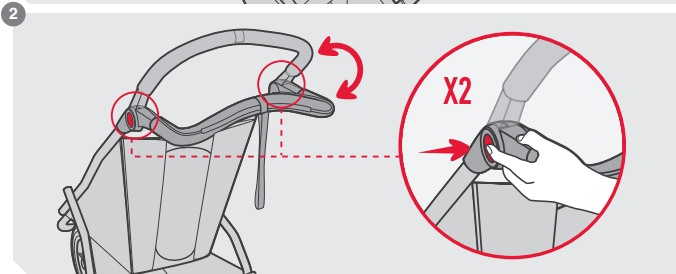
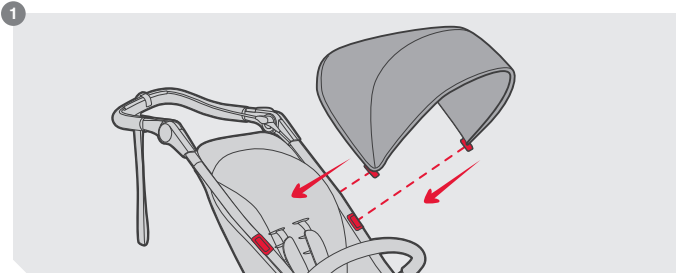






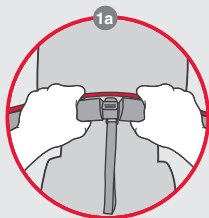
A1 max load
20kg / 44lbs

A2 max load
5kg / 11lbs

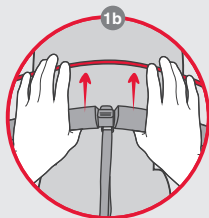




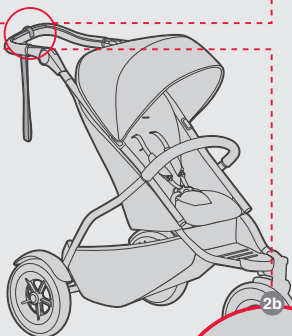
1



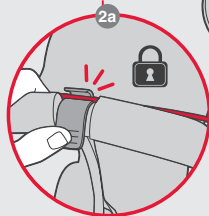
1a



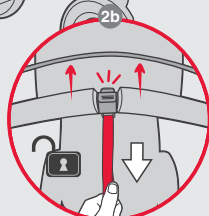
1b



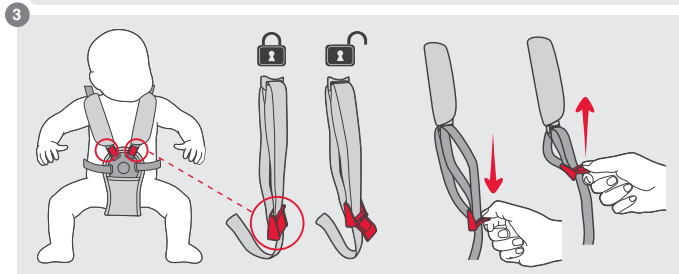
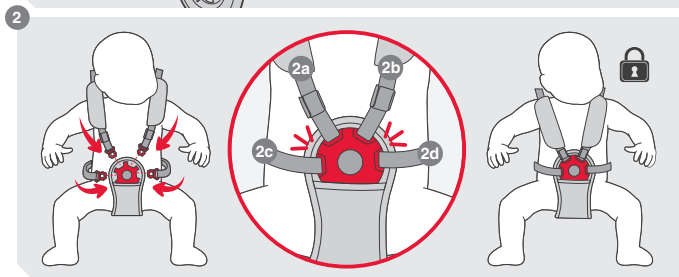
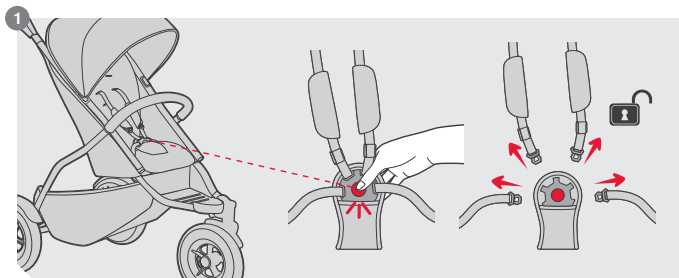
2



2a

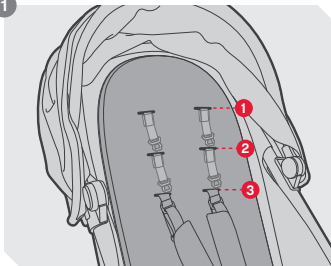


2b

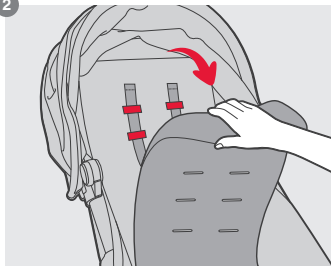




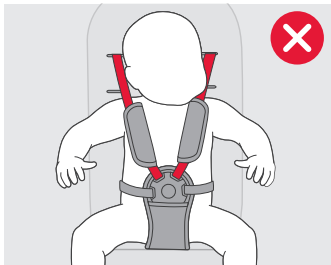
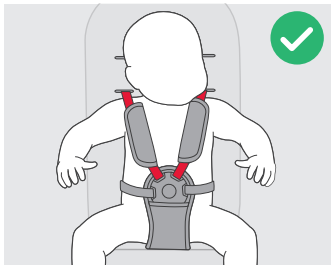
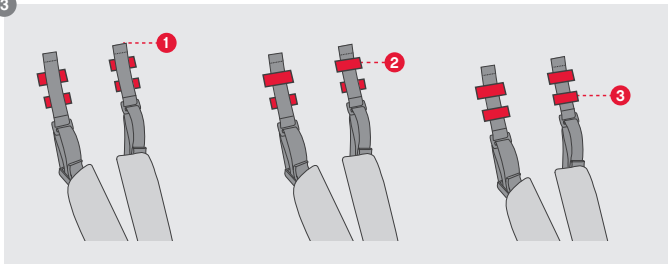
1

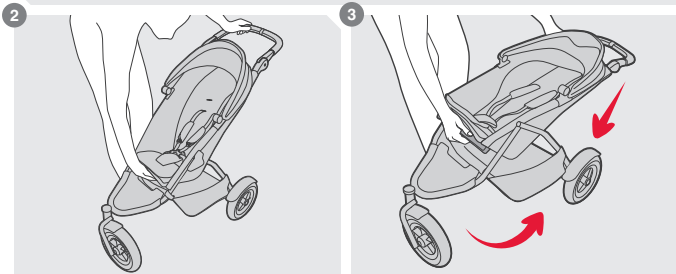
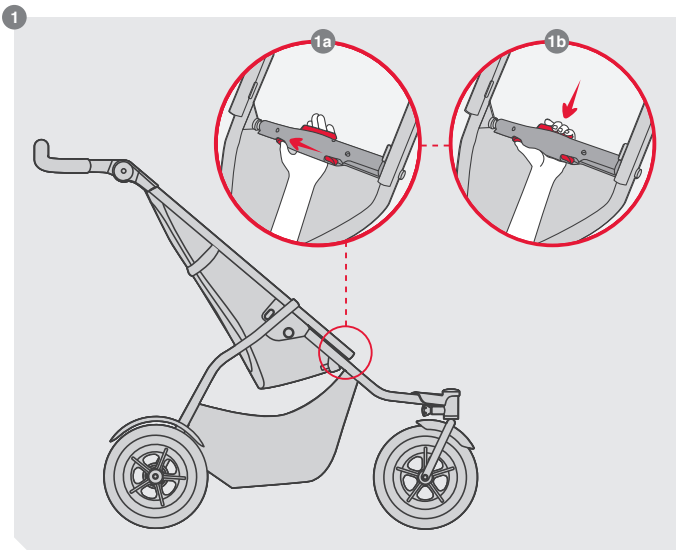


2



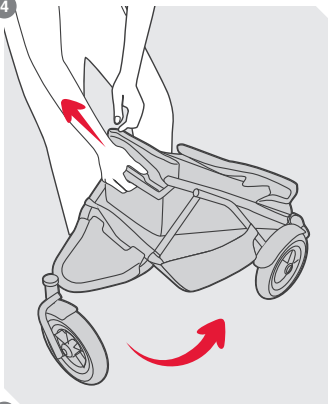
3



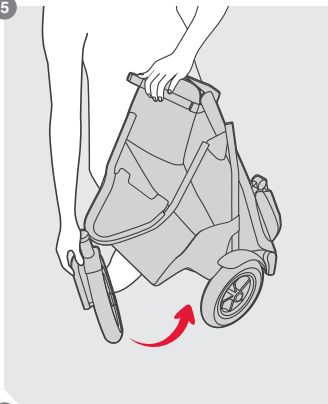




4



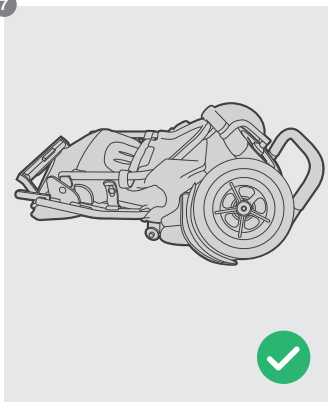
5



6



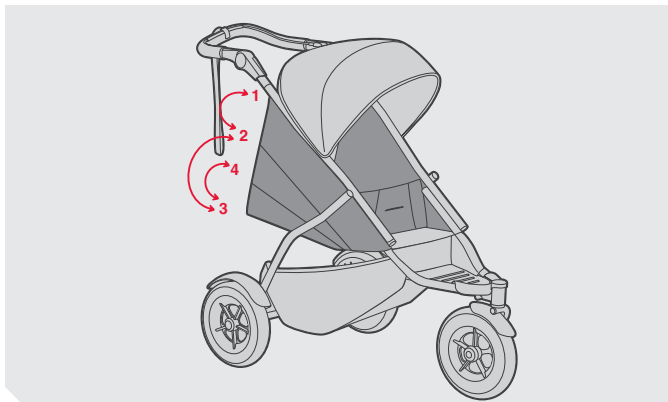
7



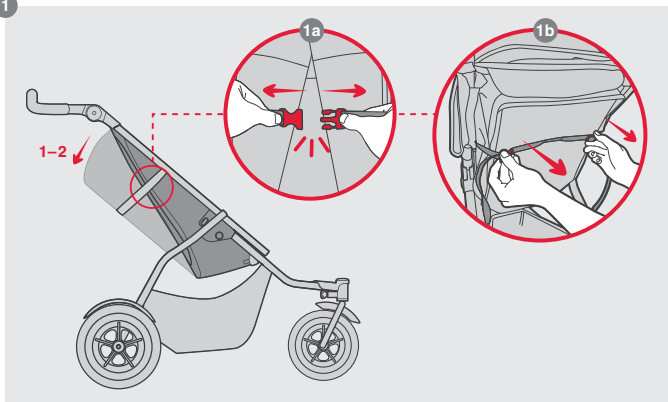




max load
9kg / 20lbs

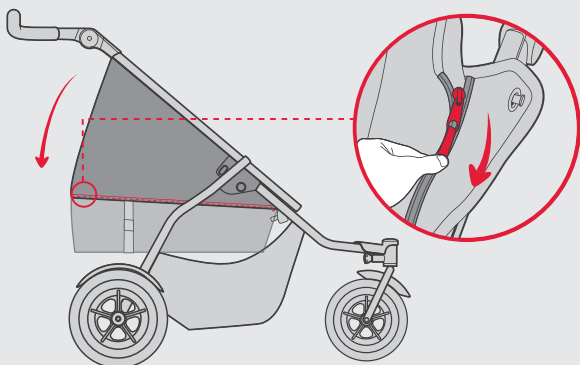


1

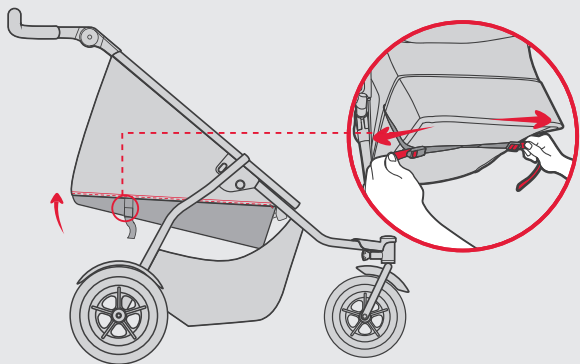




2

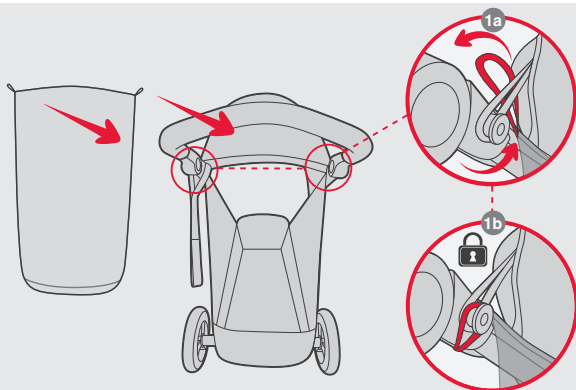


3

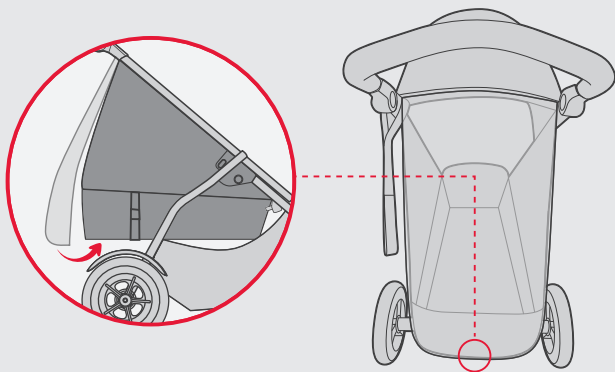


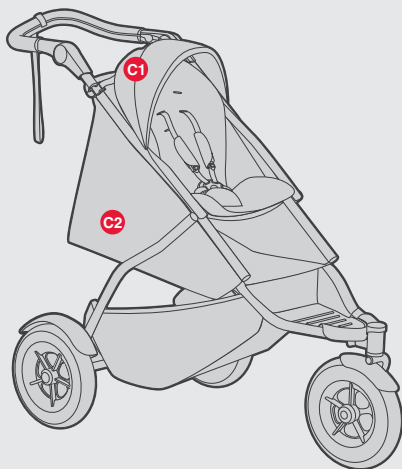


1



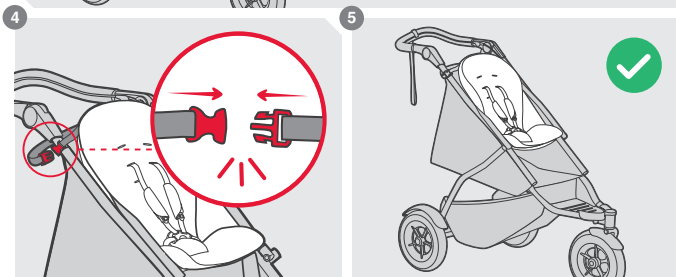
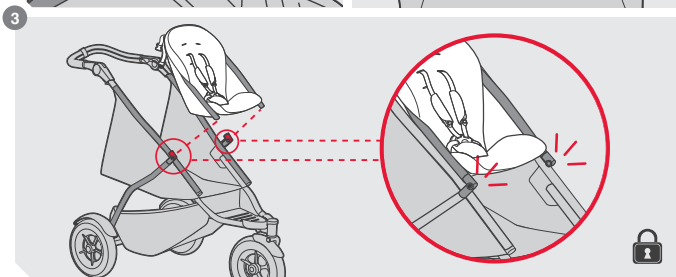
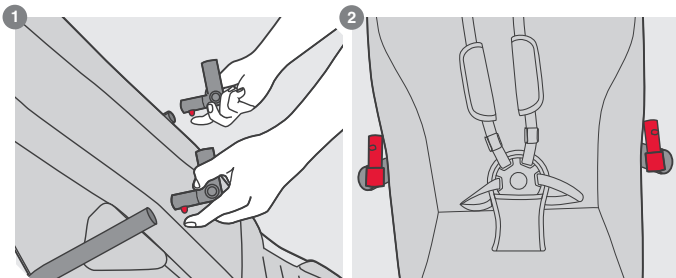
2

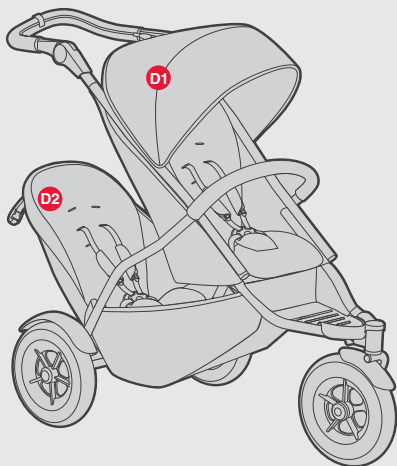




C1 max load
20kg / 44lbs

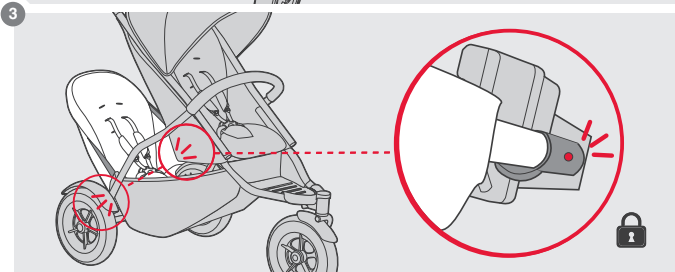
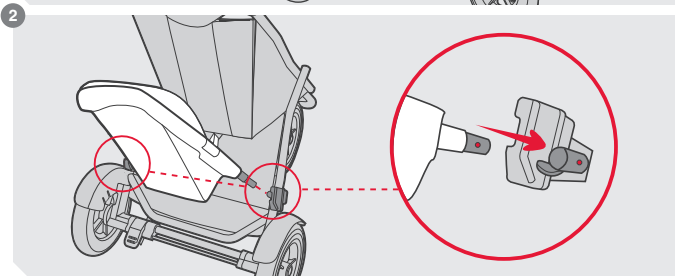
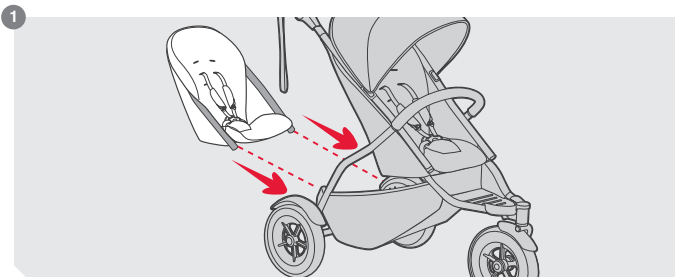
C2 max load
9kg / 20lbs

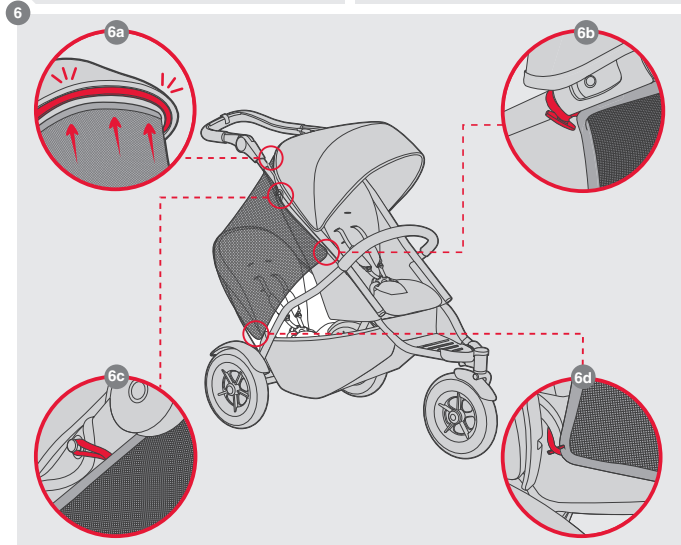
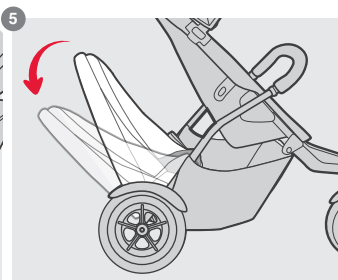
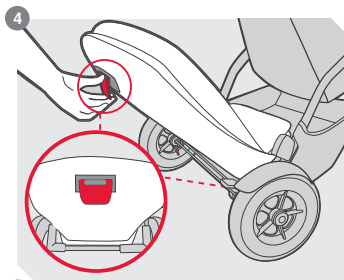




D1 max load
20kg / 44lbs

D2 max load
15kg / 33lbs



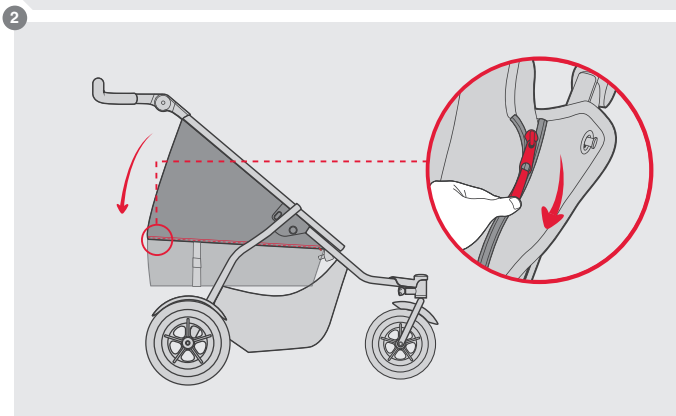
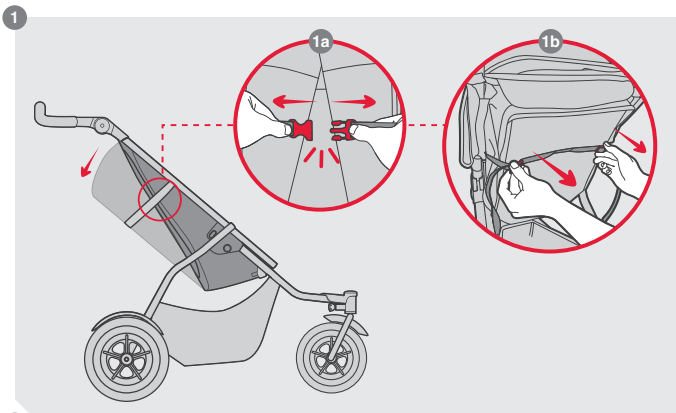






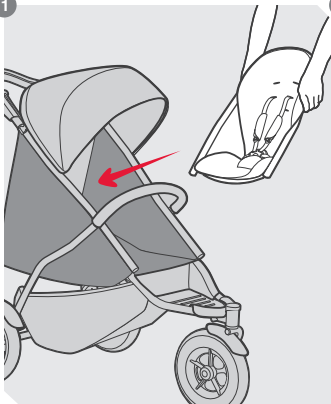
max load

12kg / 26lbs

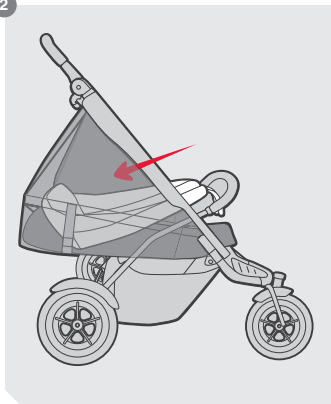




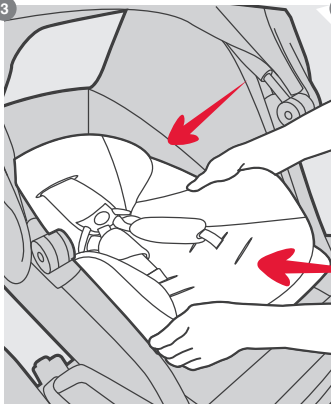
1



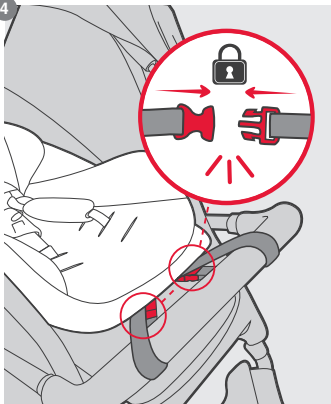
2



3



4





AUS/NZL

phil&teds
102-112 Daniell Street
Newtown, Wellington 6021
New Zealand
+ 64 4 3800 833

EUR

phil&teds Spain
Calle Casas de Campos
N°15, 3° Planta
Malaga 29001, Spain
+34-91-290 14 82

USA/CAN

phil&teds USA Inc
221 Jefferson Street
Fort Collins, CO 80524
USA.
1 800 839 4985

FRA

phil&teds France
15 rue Gertrude Bell
56000 Vannes
FRANCE
+ 33 (0) 2 97 44 88 26

GBR

phil&teds UK
71-73 Victoria St
Windsor, Berkshire
SL4 1EH, United Kingdom
+44 (0) 20-30519264

CHN

phil&teds China
No.10 East Chuangyeyuan
Road, Yangzhou
China
0086-514-87634533